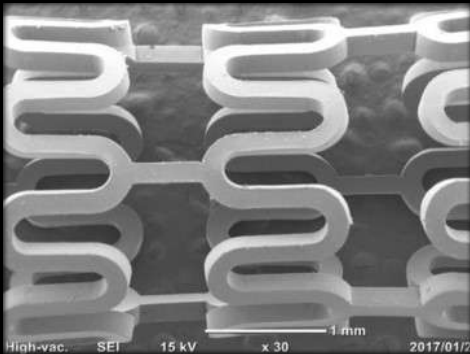


Micro Processing of Superfine Resin

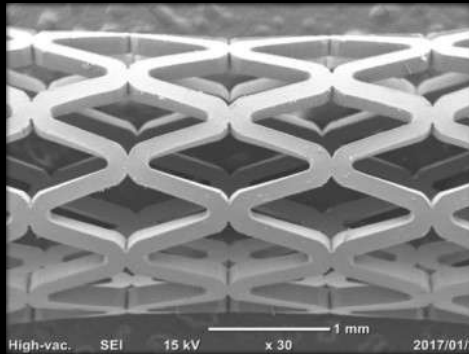
with an Ultra-short Pulse Laser

- Feature1 Possible to micro process superfine resin tubes with an outer diameter of 1 mm or less
- Feature2 High-quality processing with no thermal strain, burrs or molten material is possible
- Feature3 Possible to process regardless of the type of resin

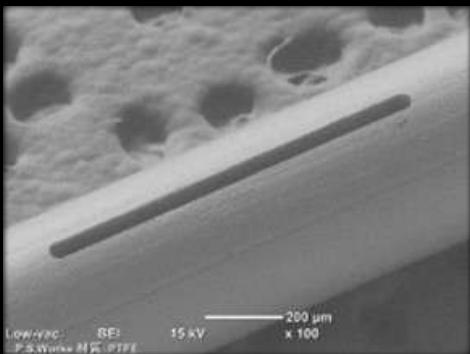
Processing Examples



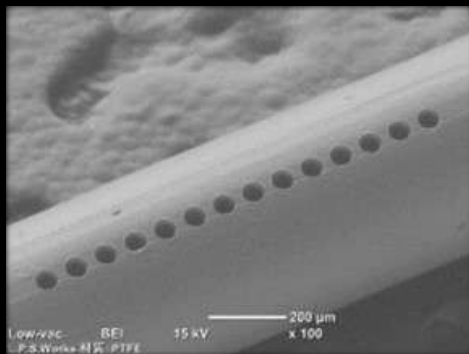
Polylactic acid resin (PLA)
Outer diameter: $\Phi 2.55$ mm
Inner diameter: $\Phi 2.20$ mm
Length: Approx. 25 mm



Polylactic acid resin (PLA)
Outer diameter: $\Phi 2.55$ mm
Inner diameter: $\Phi 2.20$ mm
Length: Approx. 25 mm



PTFE tube (Fluorine resin)
Outer diameter: $\Phi 500$ μ m
Inner diameter: $\Phi 200$ μ m
50 μ m-wide slit hole



PTFE tube (Fluorine resin)
Outer diameter: $\Phi 500$ μ m
Inner diameter: $\Phi 200$ μ m
 $\Phi 50$ μ m one-sided through-hole



Usage Examples

- Micro hole processing on the tip of medical catheters
- Next-generation resin stents



L.P.S. Works Co., Ltd.

409 OTA Techno CORE, 6-4-17 Higashi-Kojiya, Ota-ku, Tokyo, 144-0033

TEL : 03-3745-0330 FAX : 03-3745-0331

URL : <https://www.lps-works.com> E-mail : sales@lps-works.com